

Válvulas - Linha 1/4"

Características Técnicas:

Pressão de trabalho: solenóide - 2,5 a 7 Kgf/cm²
outros atuadores - 1 a 10 Kgf/cm²

Temperatura de trabalho: -10°C a 80°C

Fluído: Ar comprimido, filtrado e lubrificado

Vazão: 1,55m³ /min (a 7 Kgf/cm²)

Conexão: 1/4"


Materiais:


Corpo: Alumínio

Êmbolo: Aço retificado e cromado

Vedações: Borracha nitrílica


Referência	Acionamento	Retorno	Vias / Posições
------------	-------------	---------	-----------------

	VSM-1432	Solenóide	Mola	3 / 2
	VSM-1452	Solenóide	Mola	5 / 2
	VSD-1432	Solenóide	Diferencial	3 / 2
	VSD-1452	Solenóide	Diferencial	5 / 2
	VSPD-1432	Solenóide	Piloto	3 / 2
	VSPD-1452	Solenóide	Piloto	5 / 2

	VSS-1432	Solenóide	Solenóide	3 / 2
	VSS-1452	Solenóide	Solenóide	5 / 2
	VSS-1453-CAN	Solenóide	Auto Centr.	5 / 3
	VSS-1453-CF	Solenóide	Auto Centr.	5 / 3

	VSP-1432	Piloto	Mola	3 / 2
	VSP-1452	Piloto	Mola	5 / 2


Válvulas - Linha 1/4"


	Referência	Acionamento	Retorno	Vias / Posições
	VDP-1432	Piloto	Piloto	3 / 2
	VDP-1452	Piloto	Piloto	5 / 2
	VP-1453-CAN	Piloto	Auto Centr.	5 / 3
	VP-1453-CF	Piloto	Auto Centr.	5 / 3
	VBM-1432	Botão	Mola	3 / 2
	VBM-1452	Botão	Mola	5 / 2
	VBP-1432	Botão	Piloto	3 / 2
	VBP-1452	Botão	Piloto	5 / 2
	VBT-1432	Botão	Trava	3 / 2
	VBT-1452	Botão	Trava	5 / 2
	VB-1453-CAN	Botão	Auto Centr.	5 / 3
	VB-1453-CF	Botão	Auto Centr.	5 / 3
	VPM-1432	Pedal	Mola	3 / 2
	VPM-1452	Pedal	Mola	5 / 2
	VPP-1432	Pedal	Piloto	3 / 2
	VPP-1452	Pedal	Piloto	5 / 2
	VPT-1432	Pedal	Trava	3 / 2
	VPT-1452	Pedal	Trava	5 / 2
	VPD-1453-CAN	Pedal	Auto Centr.	5 / 3
	VPD-1453-CF	Pedal	Auto Centr.	5 / 3



Válvulas - Linha 1/4"

Referência	Acionamento	Retorno	Vias / Posições
------------	-------------	---------	-----------------

	VRM-1432	Rolete	Mola	3 / 2
	VRM-1452	Rolete	Mola	5 / 2
	VRP-1432	Rolete	Piloto	3 / 2
	VRP-1452	Rolete	Piloto	5 / 2

	VIM-1432	Pino	Mola	3 / 2
	VIM-1452	Pino	Mola	5 / 2
	VIP-1432	Pino	Piloto	3 / 2
	VIP-1452	Pino	Piloto	5 / 2

	VAM-1432	Alavanca	Mola	3 / 2
	VAM-1452	Alavanca	Mola	5 / 2
	VAP-1432	Alavanca	Piloto	3 / 2
	VAP-1452	Alavanca	Piloto	5 / 2
	VAT-1432	Alavanca	Trava	3 / 2
	VAT-1452	Alavanca	Trava	5 / 2
	VA-1453-CAN	Alavanca	Auto Centr.	5 / 3
	VA-1453-CF	Alavanca	Auto Centr.	5 / 3

Válvulas - Linha 1/4"

Kit de reparo:

Referência	Acionamento	Retorno	Vias / Posições
001-1432	Solenóide	Mola	3 / 2
	Botão	Piloto	3 / 2
	Pedal	Piloto	3 / 2
	Piloto	Mola	3 / 2
001-1452	Solenóide	Mola	5 / 2
	Botão	Piloto	5 / 2
	Pedal	Piloto	5 / 2
	Piloto	Mola	5 / 2
002-1432	Duplo Solenóide		3 / 2
	Duplo Piloto		3 / 2
002-1452	Duplo Solenóide		5 / 2
	Duplo Piloto		5 / 2
003-1432	Demais Válvulas		3 / 2
003-1452	Demais Válvulas		5 / 2

Válvulas Solenóides

Acrescer ao final da referência a voltagem da válvula.

Exemplo: Solenóide Mola 1/4", 5 vias, 2 posições, 220 VCA - referência VSM-1452 - 220 VCA

Disponíveis em:

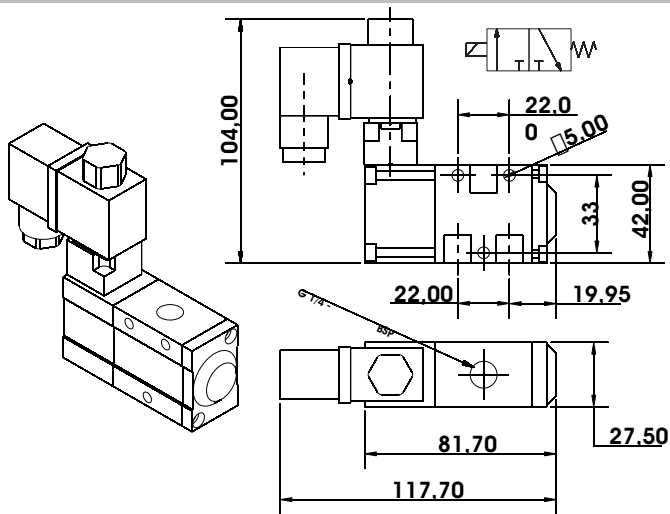
- 12 VCC e VCA
- 24 VCC e VCA
- 110 VCA
- 220 VCA



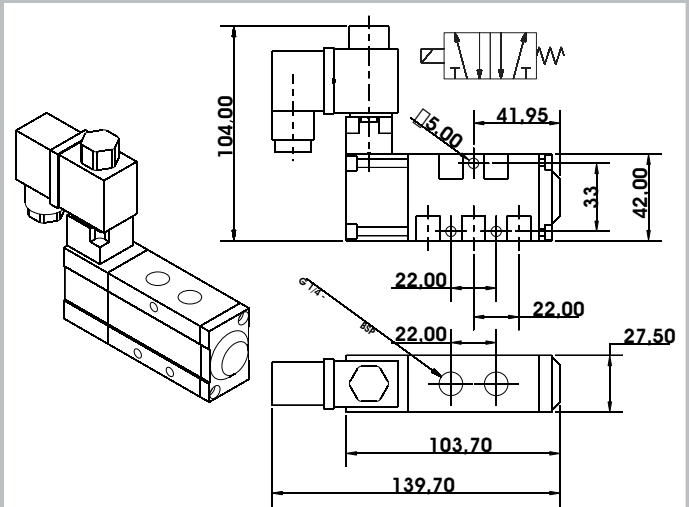
Válvulas - Linha 1/4"

Dimensional

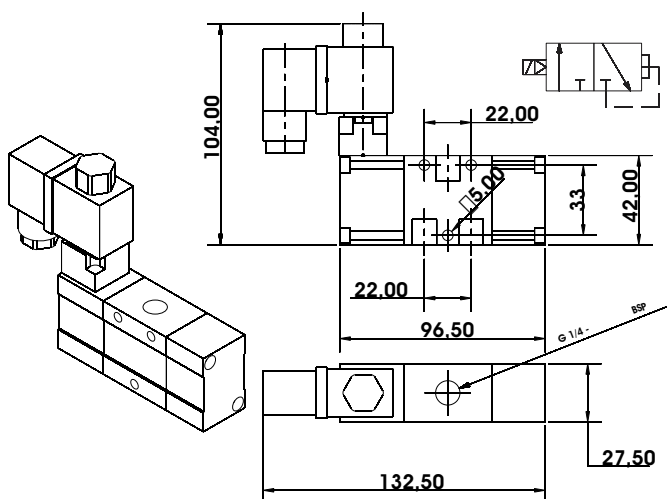
Solenóide Mola 3/2 - VSM-1432



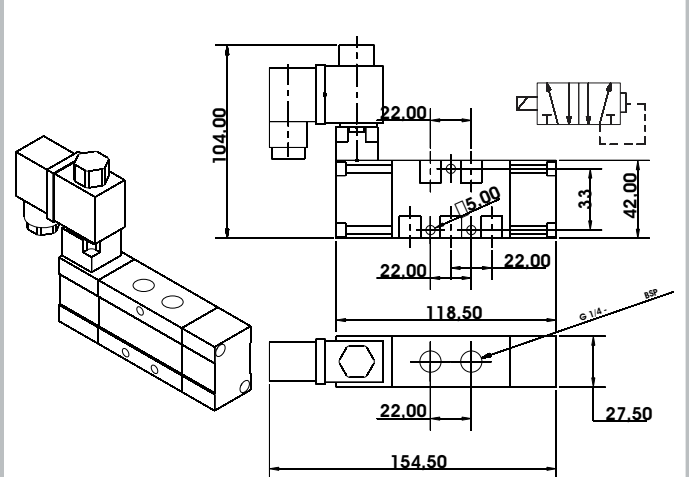
Solenóide Mola 5/2 - VSM-1452



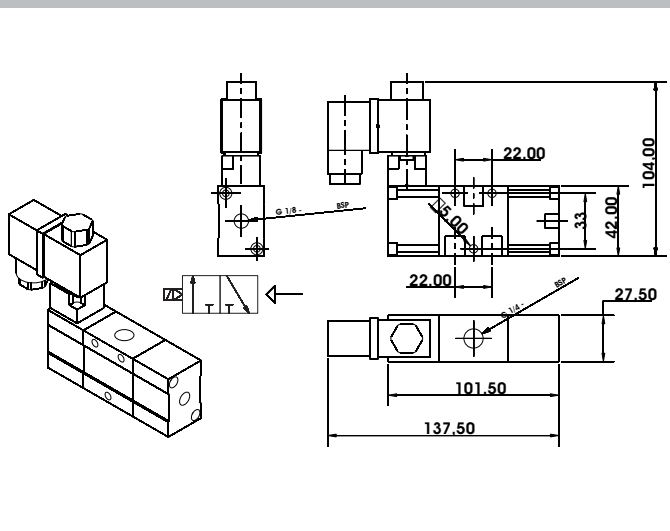
Solenóide Diferencial 3/2 - VSD-1432



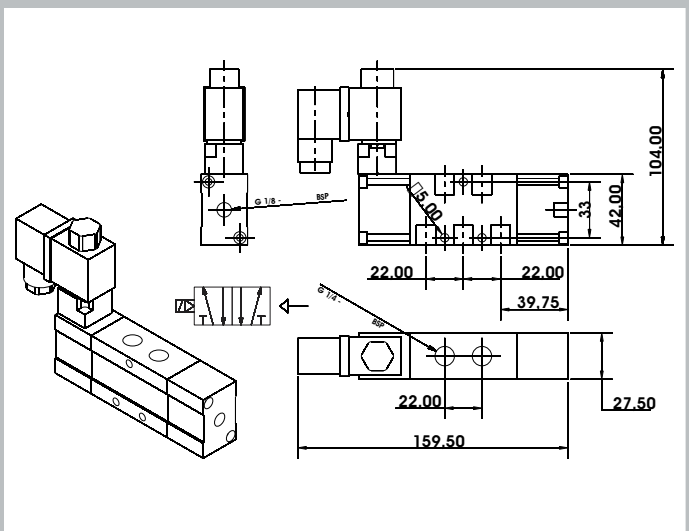
Solenóide Diferencial 5/2 - VSD-1452



Solenóide Piloto 3/2 - VSPD-1432



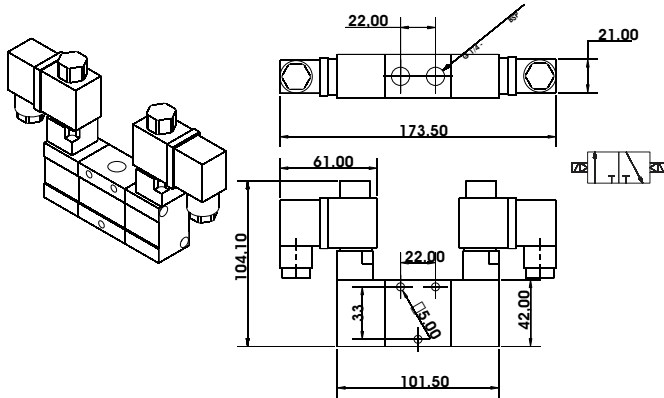
Solenóide Piloto 5/2 - VSPD-1452



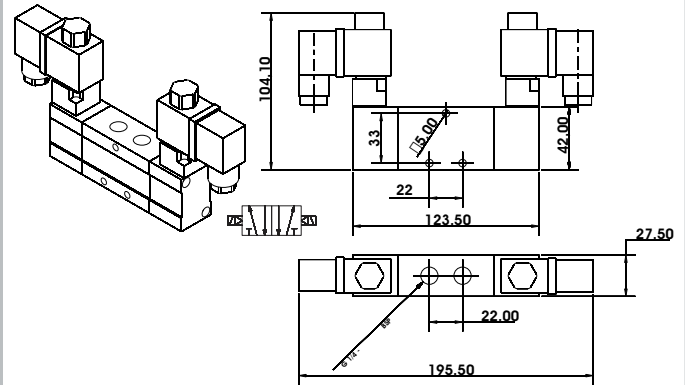
Válvulas - Linha 1/4"

Dimensional

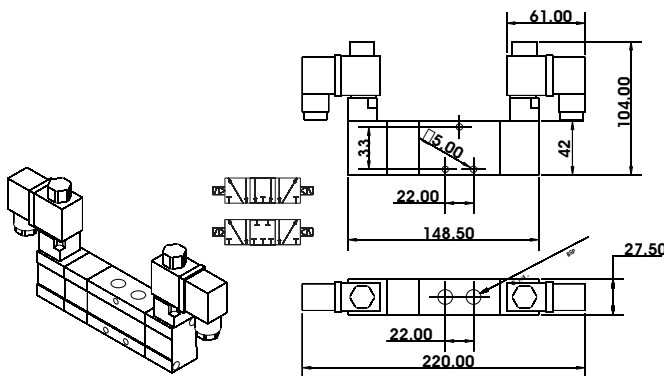
Solenóide Solenóide 3/2 - VSS-1432



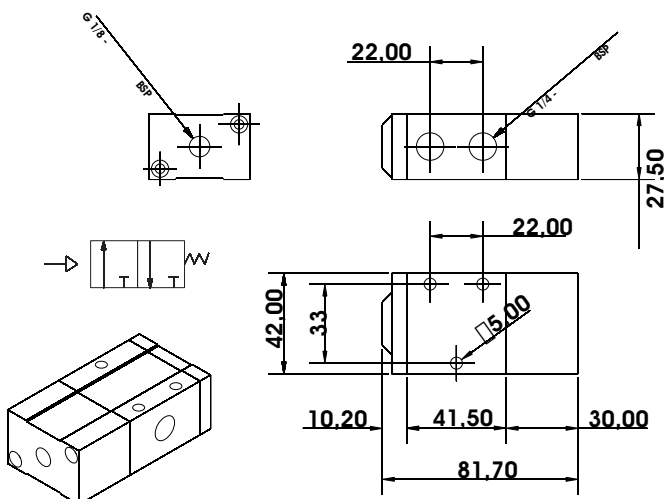
Solenóide Solenóide 5/2 - VSS-1452



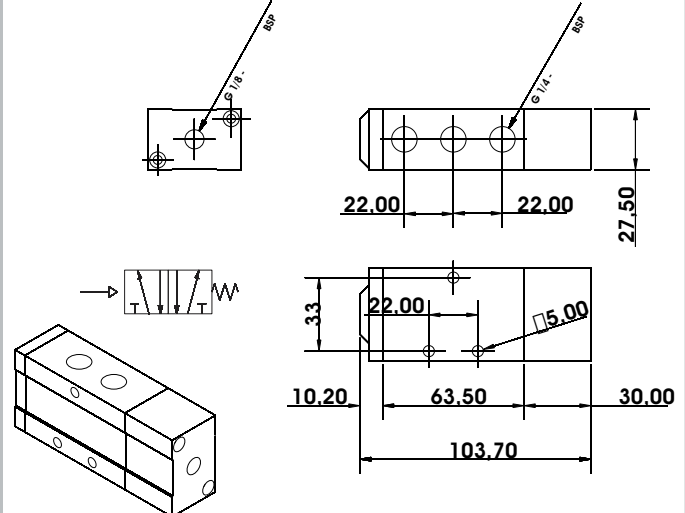
Solenóide Auto Centrante 5/3 VS-1453-CF - Centro Fechado VS-1453-CAN - Centro Aberto Negativo



Piloto Mola 3/2 - VSP-1432



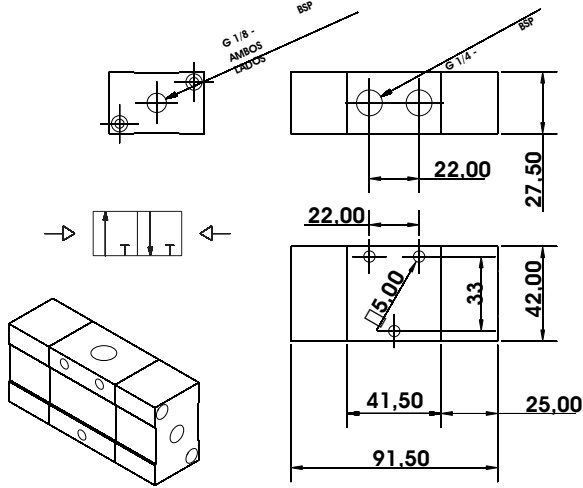
Piloto Mola 5/2 - VSP-1452



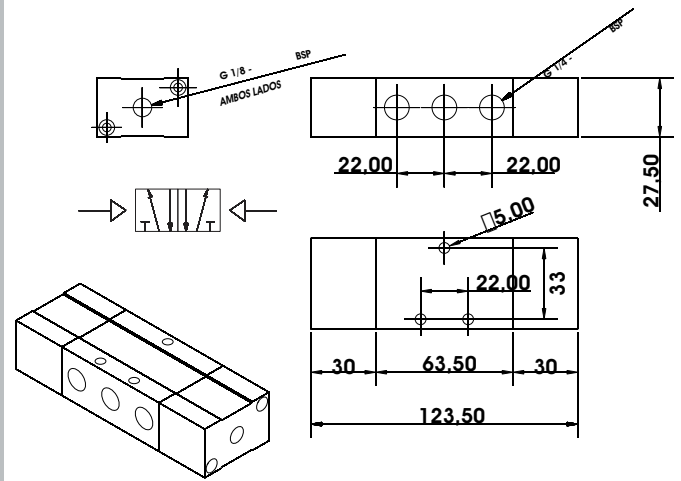
Válvulas - Linha 1/4"

Dimensional

Piloto Piloto 3/2 - VDP-1432



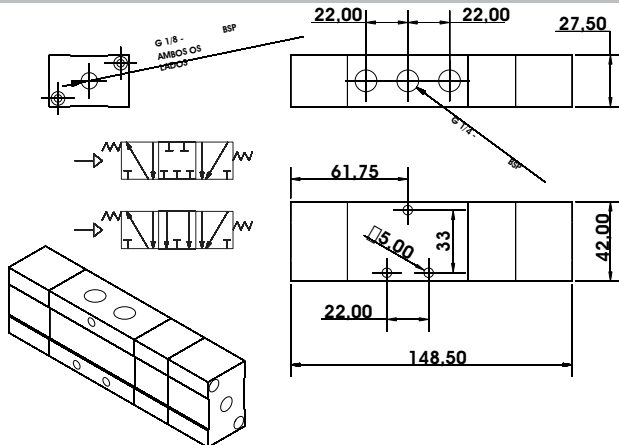
Piloto Piloto 5/2 - VDP-1452



Piloto Auto Centrante 5/3

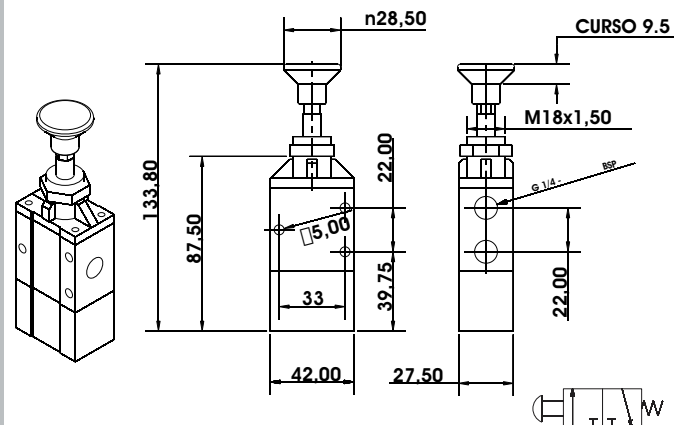
VP-1453-CF - Centro Fechado

VP-1453-CAN - Centro Aberto Negativo



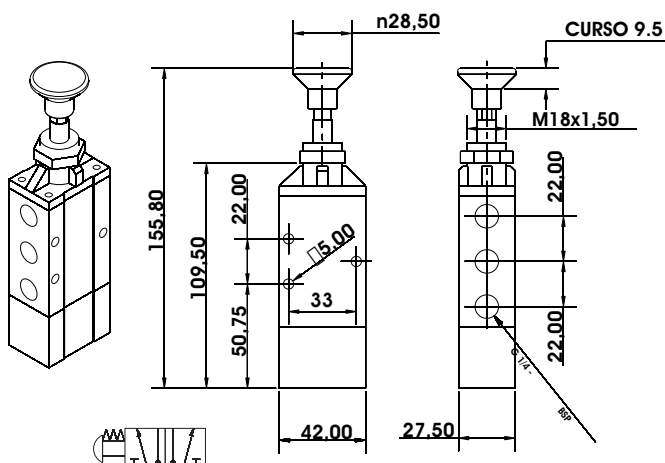
Botão Mola 3/2 - VBM-1432

Botão Trava 3/2 - VBT-1432



Botão Mola 5/2 - VBM-1452

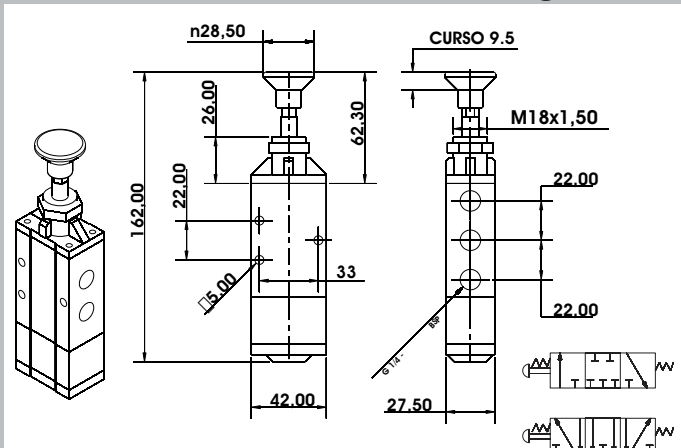
Botão Trava 5/2 - VBT-1452



Botão Auto Centrante 5/3

VB-1453-CF - Centro Fechado

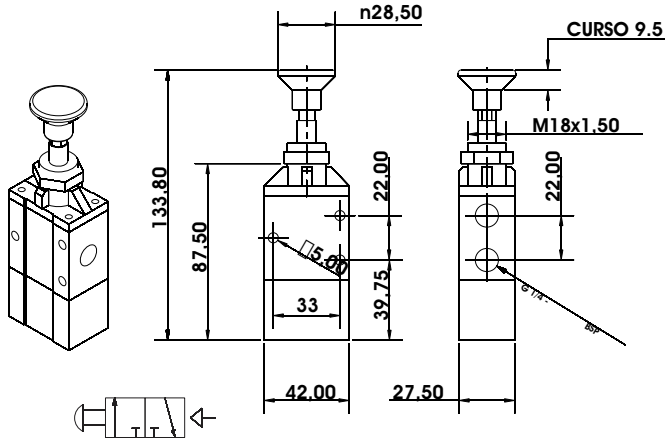
VB-1453-CAN - Centro Aberto Negativo



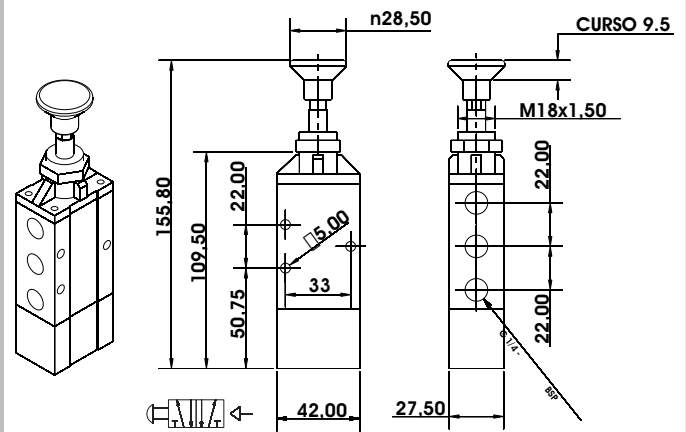
Válvulas - Linha 1/4"

Dimensional

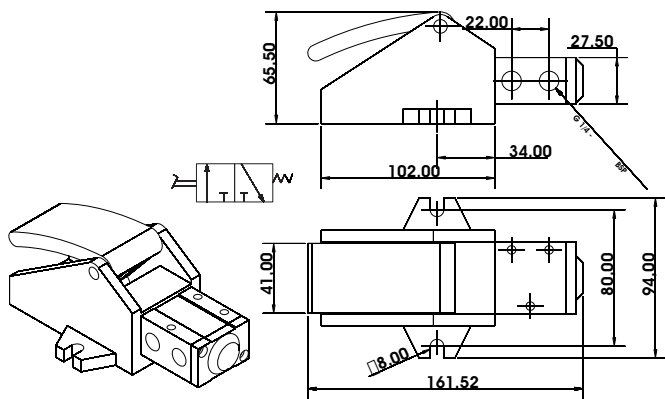
Botão Piloto 3/2 - VBP-1432



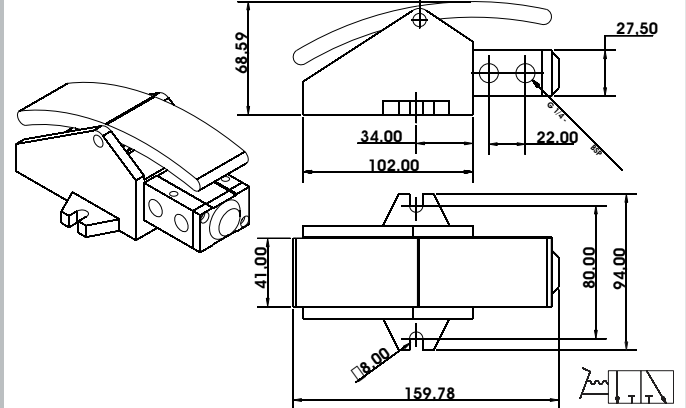
Botão Piloto 5/2 - VBP-1452



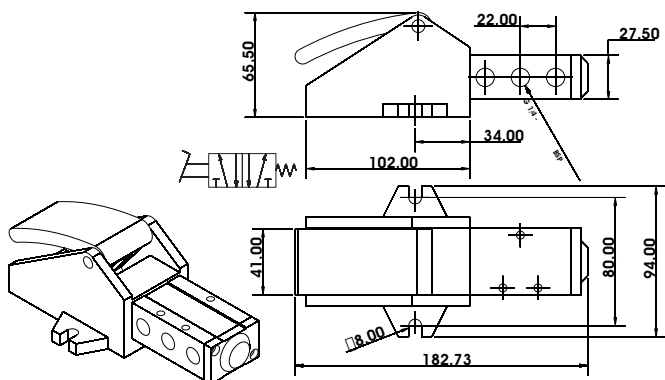
Pedal Mola 3/2 - VPM-1432



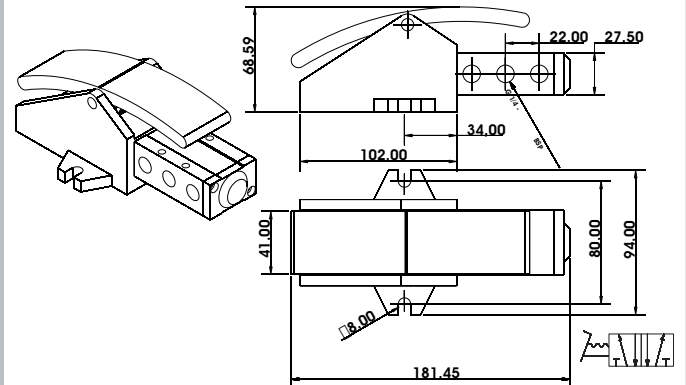
Pedal Trava 3/2 - VPT-1432



Pedal Mola 5/2 - VPM-1452



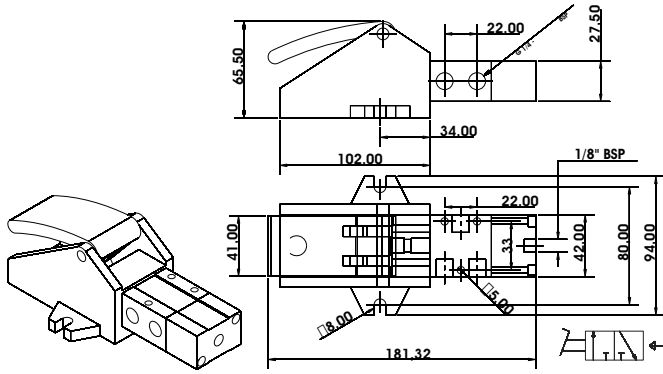
Pedal Trava 5/2 - VPT-1452



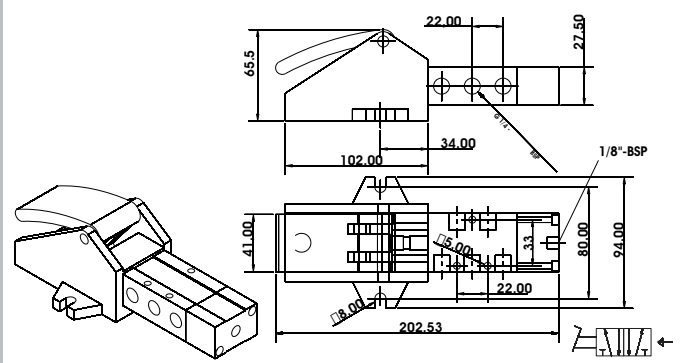
Válvulas - Linha 1/4"

Dimensional

Pedal Piloto 3/2 - VPP-1432



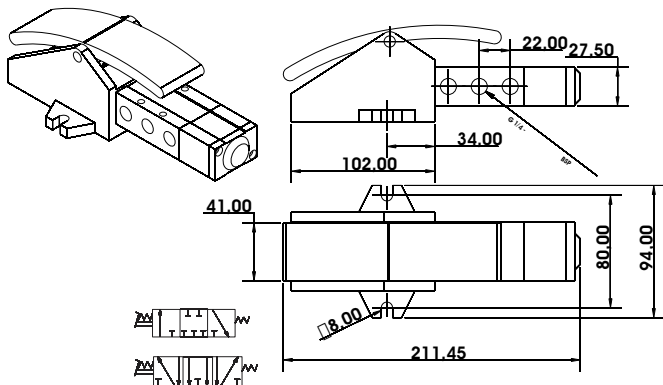
Pedal Piloto 5/2 - VPP-1452



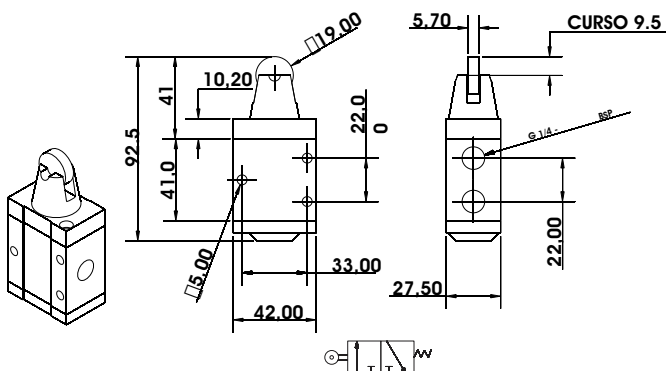
Pedal Auto Centrante 5/3

VPD-1453-CF - Centro Fechado

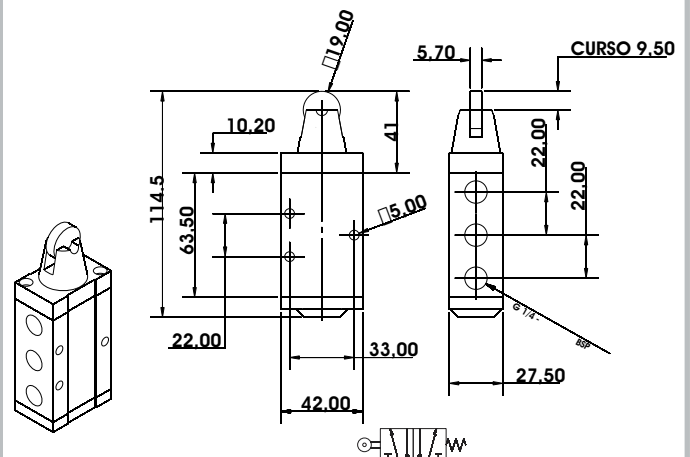
VPD-1453-CAN - Centro Aberto Negativo



Rolete Mola 3/2 - VRM-1432



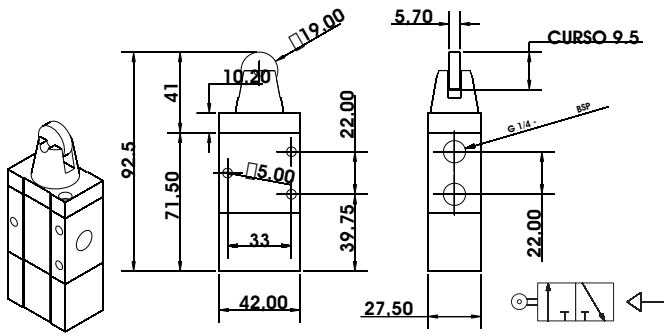
Rolete Mola 5/2 - VRM-1452



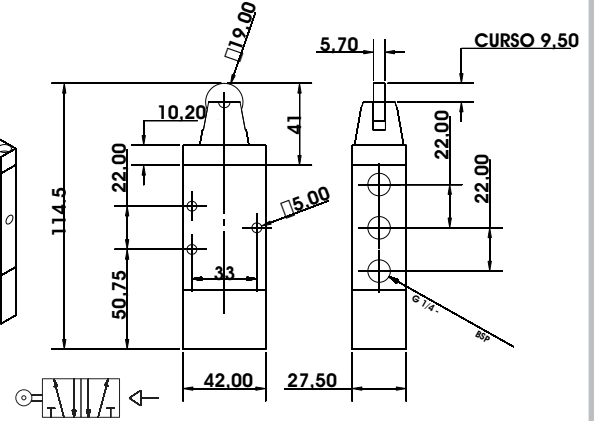
Válvulas - Linha 1/4"

Dimensional

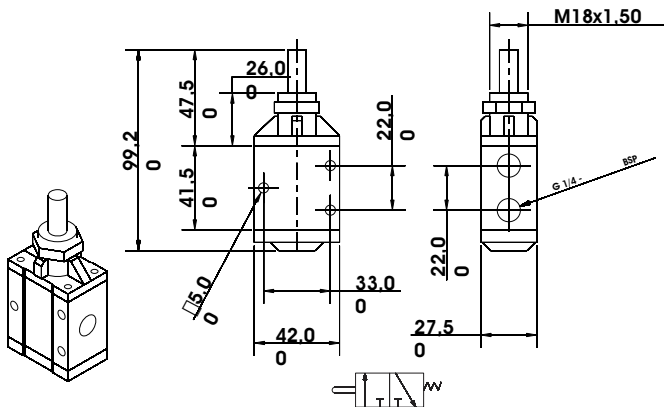
Rolete Piloto 3/2 - VRP-1432



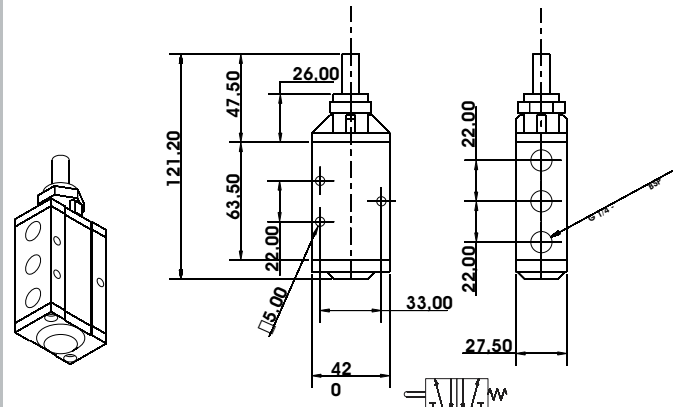
Rolete Piloto 5/2 - VRP-1452



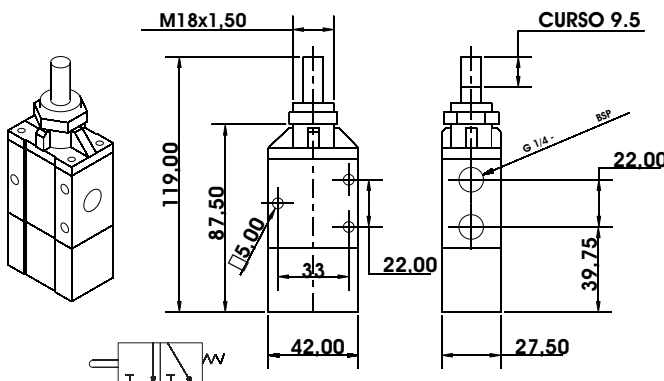
Pino Mola 3/2 - VIM-1432



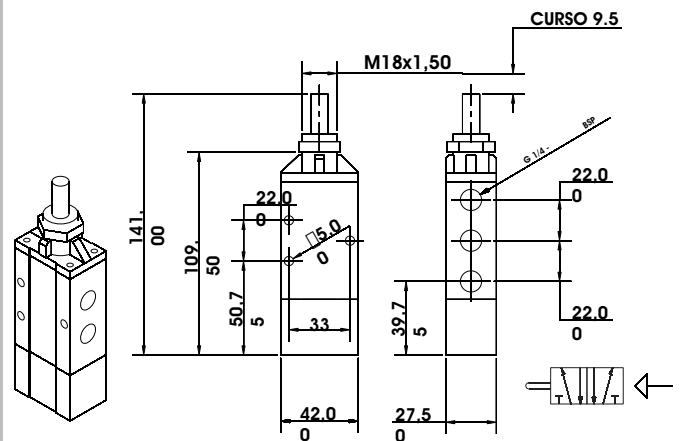
Pino Mola 5/2 - VIM-1452



Pino Piloto 3/2 - VIP-1432



Pino Piloto 5/2 - VIP-1452

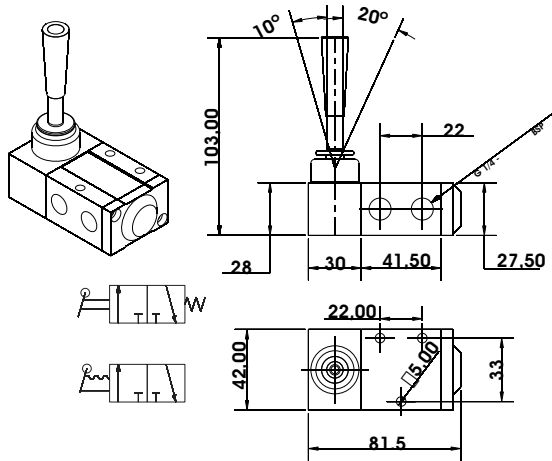


Válvulas - Linha 1/4"

Dimensional

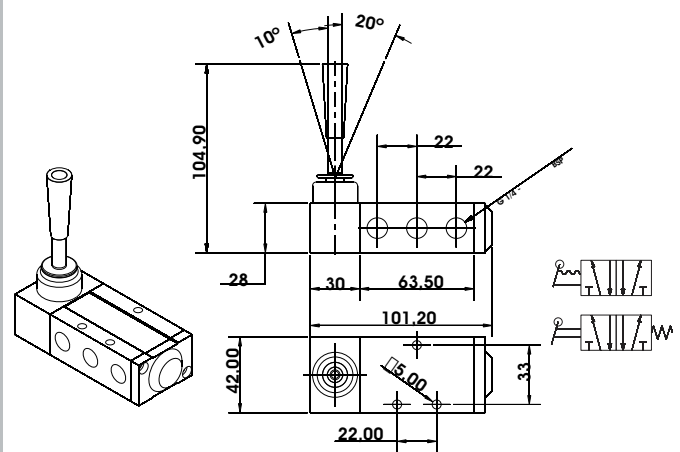
Alavanca Mola 3/2 - VAM-1432

Alavanca Trava 3/2 - VAT-1432

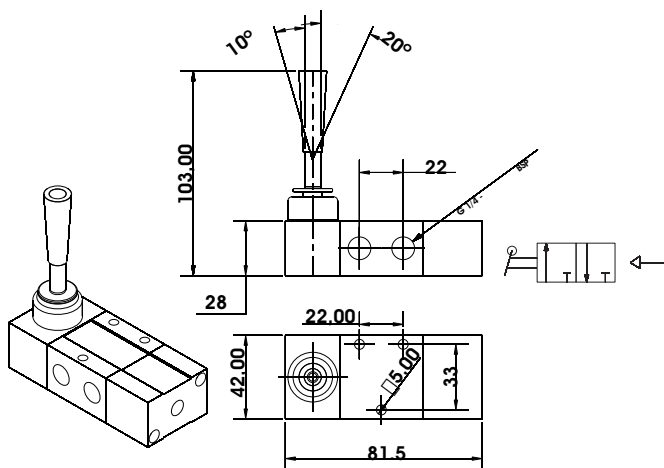


Alavanca Mola 5/2 - VAM-1452

Alavanca Trava 5/2 - VAT-1452



Alavanca Piloto 3/2 - VAP-1432



Alavanca Piloto 5/2 - VAP-1452

